

# HIGH CURRENT POWER INDUCTORS / THT TYPE

## FEATURES

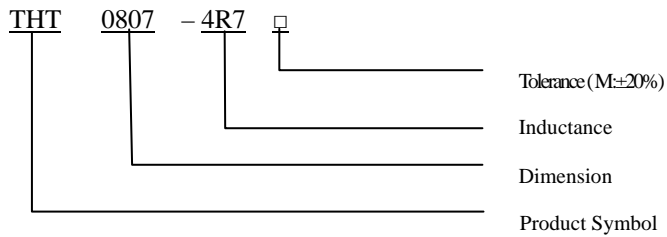
- ◆ High current
- ◆ High energy storage and low DCR.



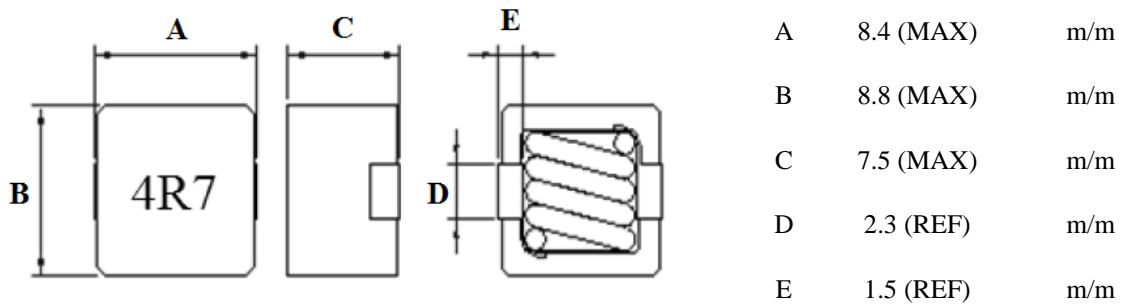
## APPLICATIONS

- ◆ PDA / Notebook / Desktop, and server applications.
- ◆ DC/DC converters in distributed power systems.
- ◆ DC/DC converter for Field Programmable Gate Array(FPGA).

## ORDERING CODE



## DIMENSIONS (UNIT: mm)



## HIGH CURRENT POWER INDUCTORS / THT TYPE

### ELECTRICAL CHARACTERISTICS FOR THT0807

| Part No.     | Inductance (uH) | Test Frequency | RDC (mΩ) MAX | IDC (A) MAX |
|--------------|-----------------|----------------|--------------|-------------|
| THT0807-R30M | 0.30            | 100KHz/0.1V    | 1.54         | 36.0        |
| THT0807-R47M | 0.47            | 100KHz/0.1V    | 1.89         | 32.0        |
| THT0807-R56M | 0.56            | 100KHz/0.1V    | 2.00         | 28.0        |
| THT0807-R68M | 0.68            | 100KHz/0.1V    | 2.10         | 23.5        |
| THT0807-R82M | 0.82            | 100KHz/0.1V    | 3.25         | 23.0        |
| THT0807-1R0M | 1.00            | 100KHz/0.1V    | 3.80         | 22.0        |
| THT0807-1R5M | 1.50            | 100KHz/0.1V    | 4.84         | 18.5        |
| THT0807-2R2M | 2.20            | 100KHz/0.1V    | 5.60         | 12.5        |
| THT0807-3R3M | 3.30            | 100KHz/0.1V    | 7.15         | 8.5         |
| THT0807-4R7M | 4.70            | 100KHz/0.1V    | 13.64        | 8.0         |
| THT0807-6R8M | 6.80            | 100KHz/0.1V    | 24.42        | 7.5         |
| THT0807-100M | 10.0            | 100KHz/0.1V    | 44.55        | 6.0         |

**CORE MASTER ENTERPRISE CO., LTD.**

<http://www.coremaster.com.tw>

